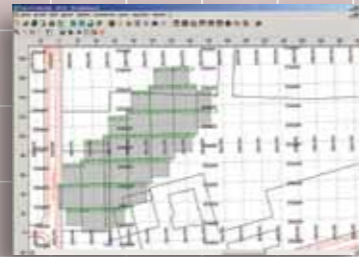


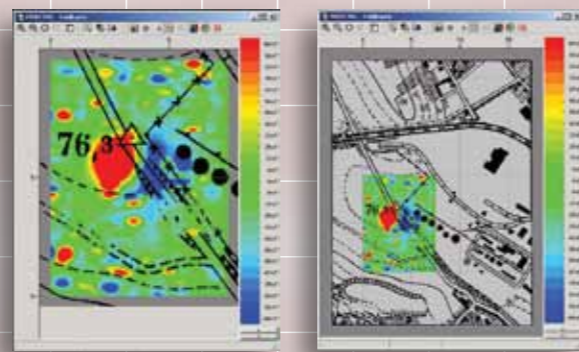
- Positioning and displaying the background map



- Overall view on all fields of a project in the project map, for example with background map and coordination grid.



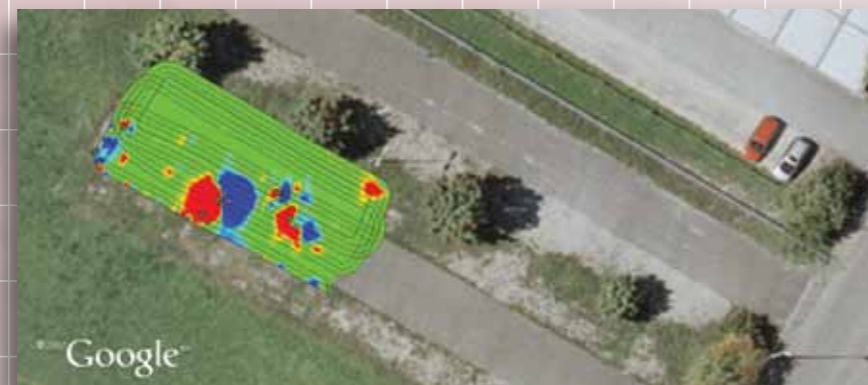
- Displaying field maps in the background



## IMPORT FUNCTIONS / EXPORT FUNCTIONS

Comprehensive import and export possibilities for data exchange with another software like for example Magneto®, Surfer®, AutoCAD®, Google Earth™, Geosoft Oasis Montaj® and others.

Georeferenced graphic display as per European patent no. EP 2 026 106



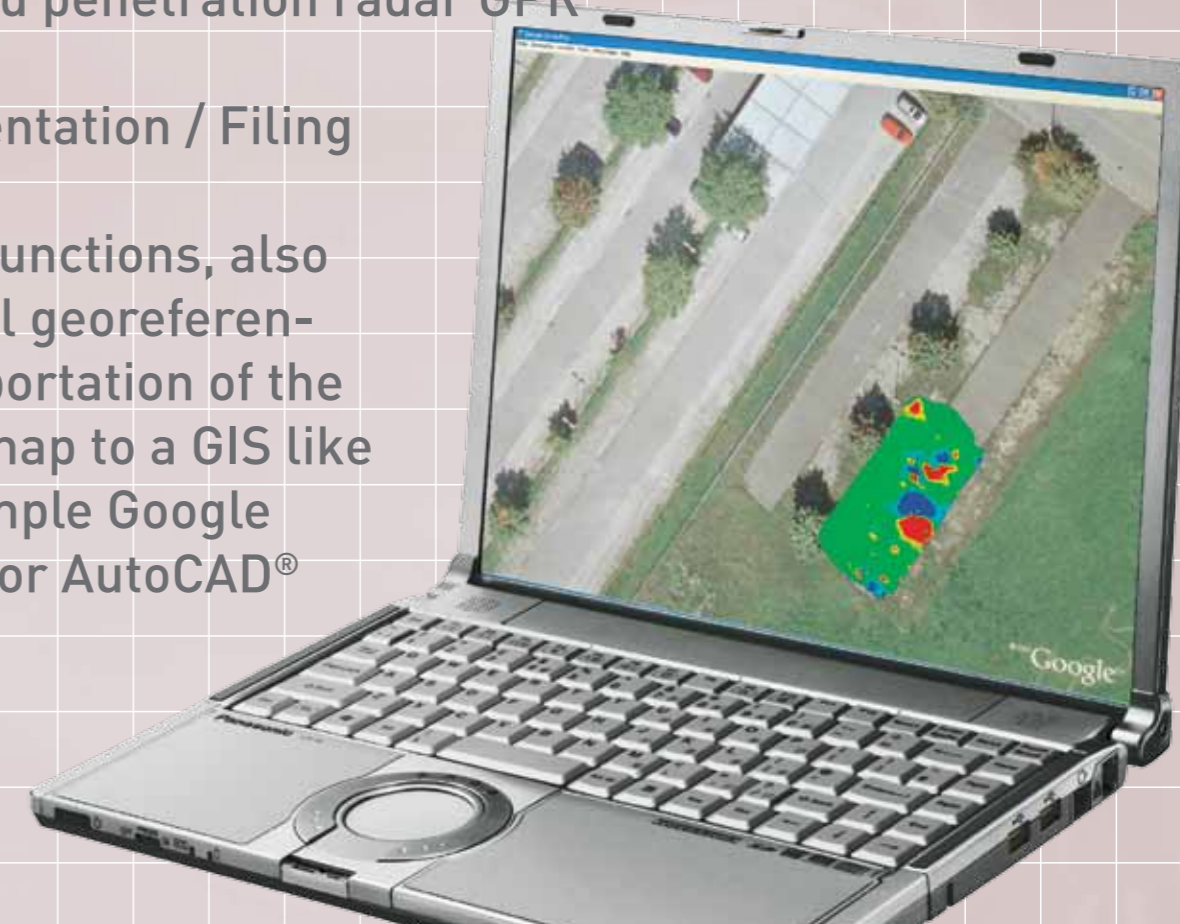
All technical data are subject to change without prior notice.  
Issue 04/2011

Google Earth™ is a registered trade mark of Google Inc., USA  
AutoCAD® is a registered trade mark of Autodesk Inc., USA  
Magneto® is a registered trade mark of Sensys GmbH, Germany  
Surfer® is a registered trade mark of Golden Software Inc., USA  
Oasis Montaj® is a registered trade mark of Geosoft Inc., Canada

# Vallon EVA 2000® 2.25

## Efficient Software for the detection of UXO's and other explosives

- Data acquisition
- Data evaluation and display of measuring data of:
  - Ferrous locators
  - Metal detectors
  - Ferrous / metal detectors combined
  - Ground penetration radar GPR
- Documentation / Filing
- Export functions, also vectorial georeferencing exportation of the colour map to a GIS like for example Google Earth™ or AutoCAD®



## Vallon EVA 2000® 2.25

comprises the following modules that can be ordered and installed according to your individual requirements. For data acquisition with a Vallon data logger and data processing with other manufacturer's software the module DATA-EXCHANGE is sufficient.

### DATA-EXCHANGE

see overleaf

### BOREHOLE

Data acquisition, evaluation and documentation of measuring data obtained during detection in boreholes with single sensors (with or without SEPOS® - Sensor Positioning System)

### SURFACE

Evaluation and documentation of measuring data obtained during detection on the surface with single sensors (with or without SEPOS® - Sensor Positioning System)

### BOREHOLE & SURFACE

Evaluation and documentation of measuring data obtained during detection on the surface or in boreholes with single sensors (with or without SEPOS® - Sensor Positioning System)

## DATA ACQUISITION

Field computer VFC2 with Software Vallon EVA Mobile or Laptop with software Vallon EVA 2000® 2.25

In case of detection with more than 1 ferrous sensor data acquisition has to be made by the additional use of the VCU2 or with a Laptop using Vallon EVA 2000® 2.25 module MULTISENSOR-DATARECORDING.



## DATA EVALUATION

In case of surface detection with single sensors or multi sensor arrays data evaluation of the whole field can be made automatically.

In case of detection in boreholes the corresponding boreholes and the depth range must be determined before starting data evaluation.

### SURFACE & GPS

Enhanced documentation with other coordinate systems, like for example WGS 84, Gauss-Krüger, UTM, French Lambert

### BOREHOLE & SURFACE & GPS

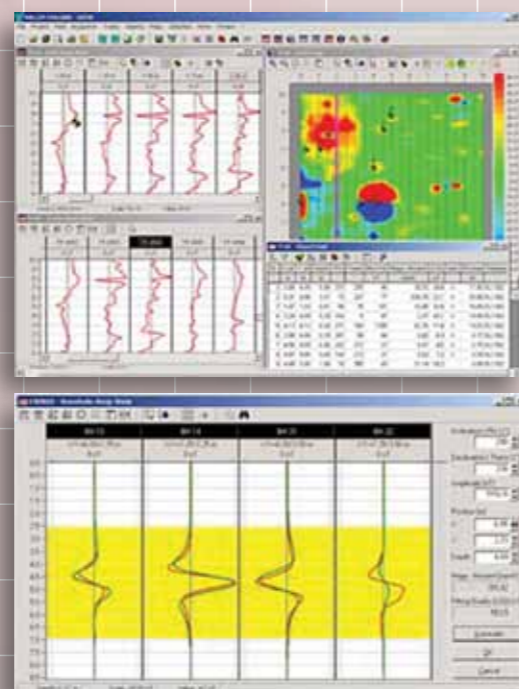
Evaluation and documentation of measuring data obtained during detection on the surface or in boreholes with single sensors and with GPS-navigation and GPS-documentation

### BOREHOLE & SURFACE & GPS & EMI-EVAL

Complete package for processing of measuring data obtained with ferrous locators and metal detectors. Evaluation of the depth of metal detectors if in gradiometer arrangement.

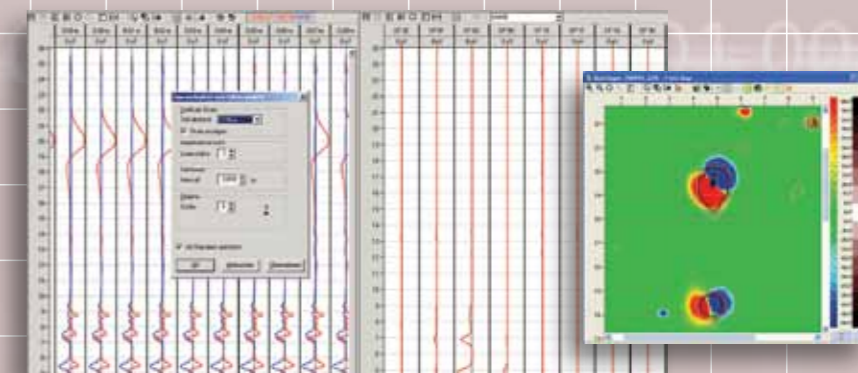
### MULTISENSOR-DATA RECORDING

Surface data recording of measuring data of one or several sensors (1-16) in different arrangements with a personal computer, also mixed with metal detectors

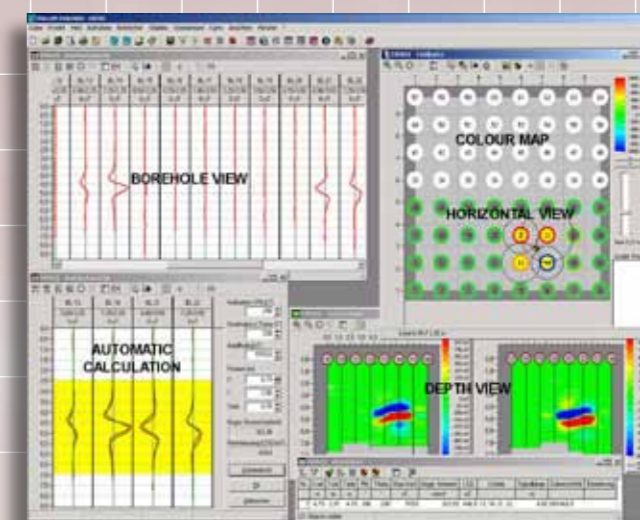


## DISPLAY

- Surface  
Display in grids and tracks  
Colour map, also combined with data of ferrous locators and metal detectors.



- Borehole  
Plan of borehole arrangement  
Measuring curve of each borehole  
Colour map of the depth view  
Marking for calculation



- Object list with position data and magnetic values as well as GEO coordinates  
WGS 84  
Gauss-Krüger  
UTM  
French Lambert

Nr.	Xrel	Yrel	Easting	Northing	Longitude	Latitude	Depth	Phi	Theta	MaxVal	Magn. Moment	LSQ	FtArea	Remark
	m	m	m	m	°	°	m	°	°	nT	AoF	nT	m²	
1	21.66	21.38	2519622.51	5371223.56	9°15.863342630	48°28.707612031	1.78	81	33	1025	147.57	40.0	25.29	
2	4.89	19.58	2519629.54	5371204.30	9°15.868995290	48°28.697207192	0.53	264	320	963	3.03	24.2	10.76	
4	4.79	14.43	2519634.49	5371202.87	9°15.873004549	48°28.696422666	0.81	253	206	350	1.00	7.6	7.97	
4	6.19	22.67	2519626.88	5371206.36	9°15.866846107	48°28.698323202	0.87	263	356	193	0.03	9.8	1.08	
5	22.44	7.56	2519645.71	5371218.12	9°15.882156010	48°28.704630361	4.33	46	38	38	78.30	0.3	56.66	

## PROJECT MANAGEMENT

- Summarizing or splitting of borehole fields or surface fields

